

The i-Volution i5120-E H.264 Triple Streaming Encoder

The i-Volution i5120-E Video-over-IP encoder delivers outstanding performance for advanced video surveillance applications requiring high resolution, full motion video. The i5120-E can encode triple H.264 video streams and a serial data channel as well as audio for transport over a standards-based IP network. Multicast H.264 video streams can be viewed simultaneously from a PC and/or CCTV monitor in the network.



Applications

- Security Surveillance
 - Airports
 - Seaports
 - Military
 - Industrial Complexes
 - Unattended Sites
- Transportation
 - City Intersection Monitoring
 - Highways
 - Rail/Metro/Subway

Features

- Extended temperature range
- Dual encoding H.264 streaming
- Up to full D1, 25/30 fps per stream
- Constant and Variable Frame Rate
- QoS enabled (L3) video streaming
- Embedded motion detection
- Contact Sense / Contact Closure

High Resolution - Full Motion – Best Compression

The i5120-E provides high quality digitized video over standard IP Ethernet networks using H.264 compression. Every image is encoded in real-time and transmitted up to 25/30 (PAL/NTSC) frames per second. This advanced capability provides full motion quality video for digital video surveillance applications using the most powerful video compression scheme available today.

Scalable H.264 Video

The i5120-E utilizes H.264 as the primary compression scheme. H.264 is recognized as currently the most scalable compression available capable of supporting video over a wide range of available bandwidth from as low as 32kbps to full quality/full motion video at 2Mbps

Triple Encoding H.264 Streaming

The stand-alone i5120-E provides diversity with triple encoding (dual streaming) up to full D1. Full resolution video can be streamed to monitors for viewing high quality video while secondary streams are encoded at lower frame rate for servicing lower bandwidth applications such as recording, Internet Streaming and/or wireless.

Extended Temperature Range

The i5120-E is designed to provide high availability. The unit is environmentally rugged for operating over extended temperature ranges of -20C to +60C.

Standards Compliant

Video is encoded using a choice H.264, MPEG-4 or MJPEG compression. The video stream can be viewed with Impath ClientVue software and/or 3rd Party products. The video, audio and serial data can be transmitted over any standard IP network. This includes Ethernet, Gigabit Ethernet, SONET/SDH and ATM networks

Network Managed

The i5120-E can be managed either locally or remotely using a WEB Browser interface (HTTP).

i-Volution i5120-E H.264 Triple Streaming Encoder

**Control Center
Large Video Display
Monitoring**



Internet Streaming



H.264
Full resolution
and motion
pictures

Internet
Streaming
Server

**Wireless
(Very Low Bandwidth)**
H.264
Reduced fps
and resolution

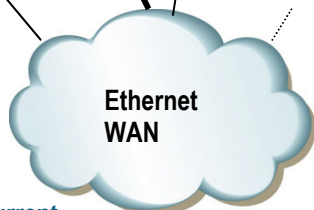


Storage

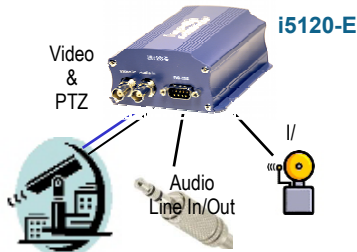


H.264
Reduced
fps and/or
resolution

MPEG-4



**Concurrent
Triple
Streaming
Video Streams**



Typical Application

Model	Features
i5120-E	H.264 encoder
i5120-Ea	MPEG-2 encoder
i5120-Eb	H.264 + MPEG-2 encoder
i5120-Ec	MPEG-4 + MPEG-2 encoder
i5120-Ed	MPEG-4 encoder

Video

Compression	ITU H.264, MPEG-2, MPEG-4 and MJPEG
Resolution	Full (4CIF), 2CIF, CIF, QCIF NTSC 720x480, 352x480, 352x240, 176x144 PAL 720x576, 325x576, 352x288, 176x144
Bit Rate	32kbps to 2Mbps (128Kbps to 6Mbps MPEG-2)
Image Frame Rate	Constant and Variable 1 to 25/30 fps
Multi-Stream	Triple H.264 Encoding up to D1, 25/30 fps
Network Connections	User Configurable Unicast and Multicast
Video Input	One Composite Video, 1.0Vp-p, 75 ohm, via BNC Connector

Network Interface

LAN Interface Protocols	IEEE 802.3 Ethernet RJ-45, 10/100Base-T, Auto-Sensing TCP, UDP, IPv4, IGMPv2, HTTP, NTP, DHCP RTSP, RTP
-------------------------	--

Serial Data

Format	Serial, Asynchronous
Interface Protocol	Port 1 - RS232, Port 2 - RS422/485
Data Rate	300bps to 115kbps
Connectors	2 Ports via Terminal Block and DB9-F

Audio

Mode	Bi-Directional
Encoding	Ogg Vorbis
Connectors	Via mini jacks

Contact Sense & Closure

Contact In / Out	TTL IN / Relay Out via Terminal Block
------------------	---------------------------------------

Motion Detection

Zones	Multi-zones with sensitivity settings
-------	---------------------------------------

Management

Console	Local via serial port
Local Status	LED Status Display
Web Browser	Microsoft IE ver. 6.0 or higher
Security	Admin configured User Name & Password login

Environmental

Temperature	Operating -20 to +60C (-5 to +130F)
Relative Humidity	5% to 95% Non-Condensing
Protection	EU Directive 20002/95/EC

Power Requirements

Input Voltage	11.4 to 13.2 VDC (AC Adapter Included)
Power Consumption	Approx. 12W

Physical

Dimensions (WxHxD)	12.7cm x 4.37cm x 19cm (5.0" x 1.72" x 7.5")
Weight	Approx. 0.6 Kg (1.32 lbs)

Regulatory Approvals

Emissions	EN55022:1998 Class A, EN6100-3-2:1995 & EU
North America	EN6100-3-3:1995
Australia/NZ	FCC47 CFR Part 15, Subpart B:1999 Class A
Immunity	AS/NZS 3548:1995 Class A EN55024



Impath Networks Canada Corporation 42 Payzant Avenue, Suite 100, Halifax, NS Canada B3B 1Z6
T: 902-468-1010 F: 902-468-1044 impathnetworks.com

Impath Networks Ltd. 9 Camelot Drive, Suite 100, Ottawa, ON Canada K2G 5W6
T: 613-226-4000 F: 613-226-4602 impathnetworks.com

Copyright 2009 Impath Networks Canada Corporation. Impath is a registered trademark of Impath Networks Canada Corporation. TeleVue, ClientVue and i-Volution are trademarks of Impath Networks Canada Corporation All other trademarks are those of their respective owners.

Printed in Canada – 01/09. Specifications subject to change without notice or obligation. 39Mbr_179_102_i5120-E_i1